

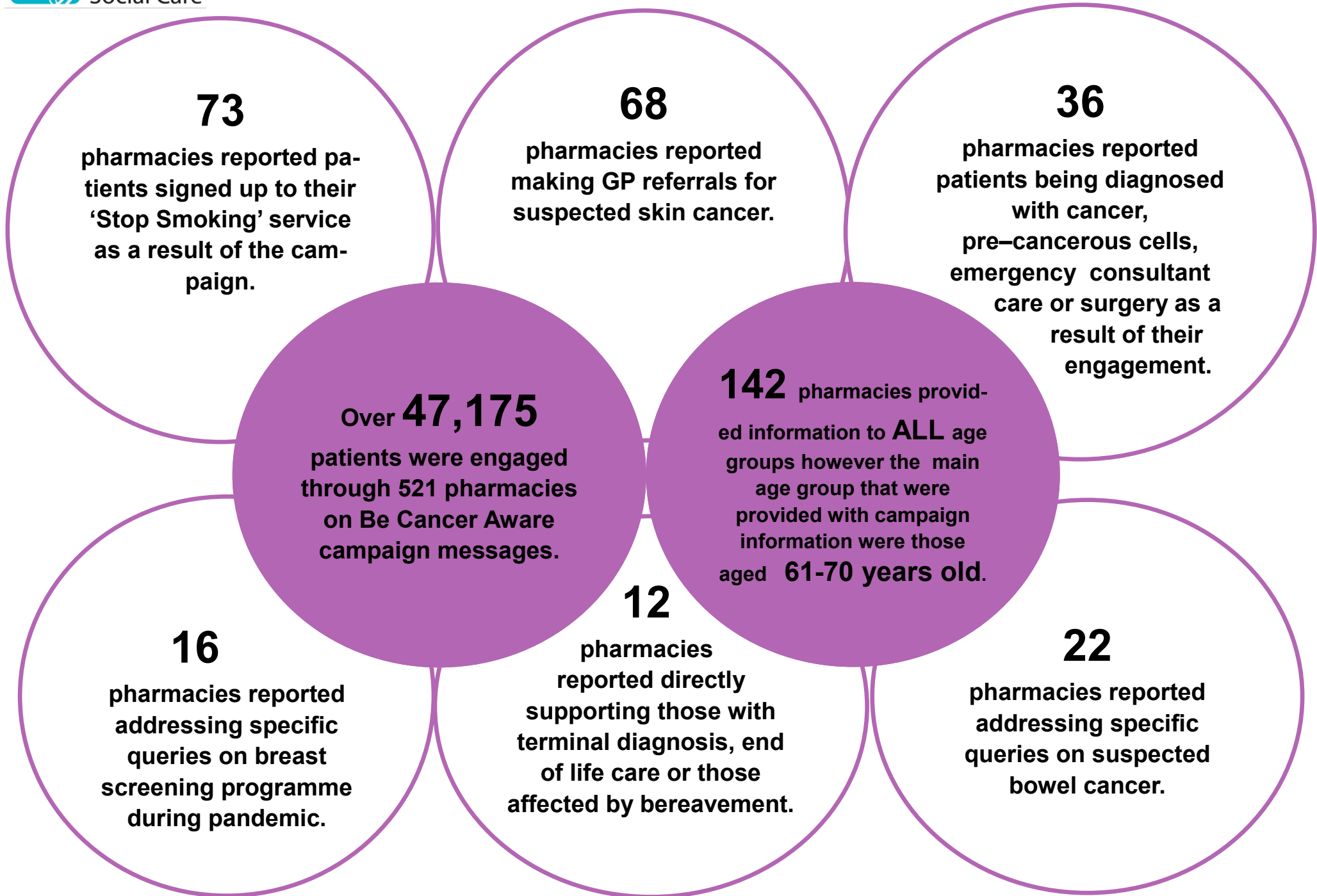


**BE CANCER
AWARE** **Ca** **GET CHECKED
EARLY**

Community Pharmacy
Living Well
Campaign

The information used to develop this report is from our submissions of pharmacy team evaluation surveys from 98% of Living Well contracted community pharmacies .

Evaluation figures are an estimation provided by contracted community pharmacies.



The information used to develop this report is from our submissions of pharmacy team evaluation surveys from 98% of Living Well contracted community pharmacies.

Evaluation figures are an estimation provided by contracted community pharmacies.

Number of Pharmacies that addressed queries on:

381	Cancer symptoms
301	Reducing risk
248	Diet
204	Physical Activity
192	Care in the sun
214	Alcohol
358	Smoking
159	Screening
160	Cancer support
123	Cancer treatments
108	Coping with Cancer and COVID-19
123	Palliative care
101	Cancer bereavement



How did Pharmacy engage?

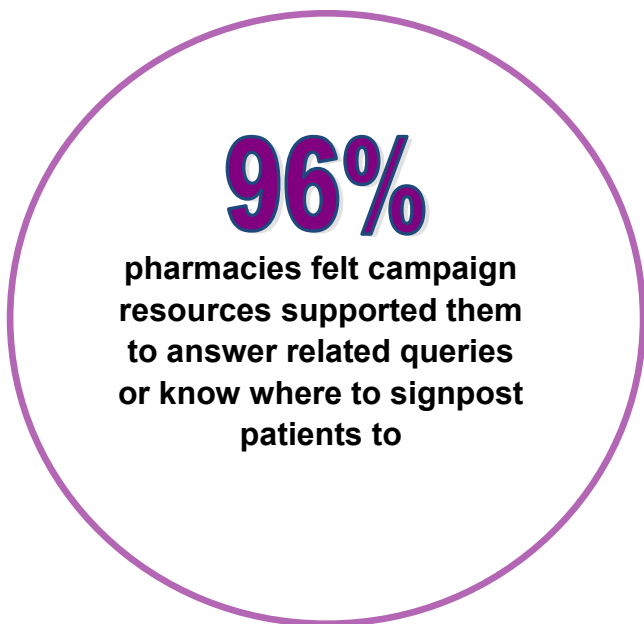
54	Via their delivery driver
59	Used social media or their website
477	Displayed leaflets
60	Created visual displays at windows and instore
241	Provided leaflets alongside prescriptions
56	Disseminated information to other healthcare professionals
5	Disseminated information to schools or other educational settings
33	Disseminated information to community groups
7	Disseminated information to churches
23	Disseminated information to local retail shops

The percentage of pharmacies that reported the public's feedback to the "Be Cancer Aware" campaign to be:

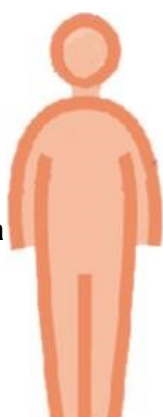
27% "very positive"

57% "positive"

16% "neutral"



5 pharmacies referred patients to a social prescribing project



198 pharmacies referred patients to a another pharmacy service, such as stop smoking



218 pharmacies referred patients to another healthcare professional



27 pharmacies referred patients to a community or voluntary service



The information used to develop this report is from our submissions of pharmacy team evaluation surveys from 98% of Living Well contracted community pharmacies .

Evaluation figures are an estimation provided by contracted community pharmacies.