

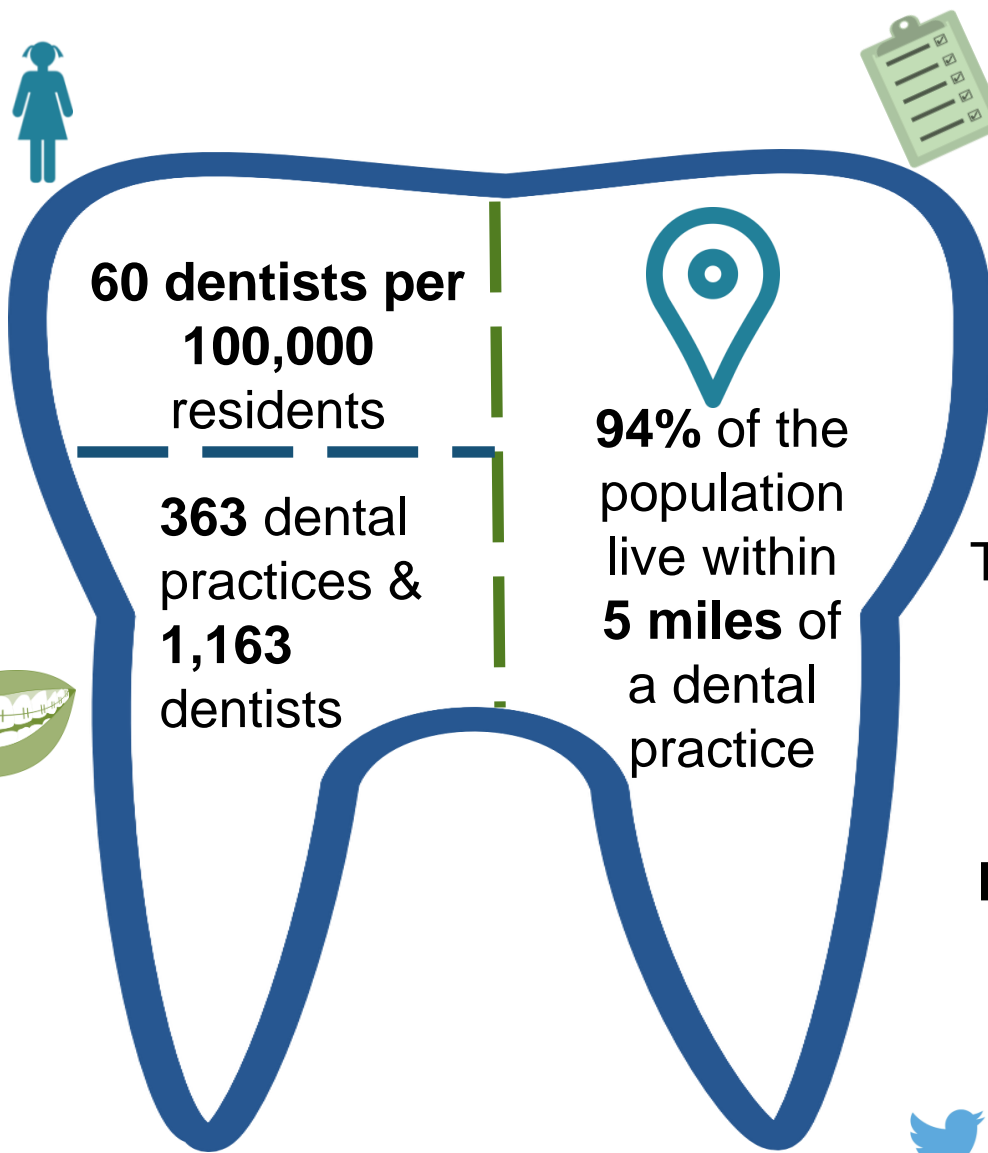


General Dental Services

Over **97,000**  children received dental treatment in excess of the basic treatments, a rise of **28%** on 2021/22.

Similarly **31%** more adults were seen in 2022/23 

Females (73%) are more likely to be registered than **Males (66%)**



70% of the population are **registered** with a health service dentist (**75%** of **children**)



The net cost of primary care dental services was **£100.0m** with an additional **£13.0m** in **Covid-19 Support Payments**. There was a further **£20.4m** in **Patient Contribution**